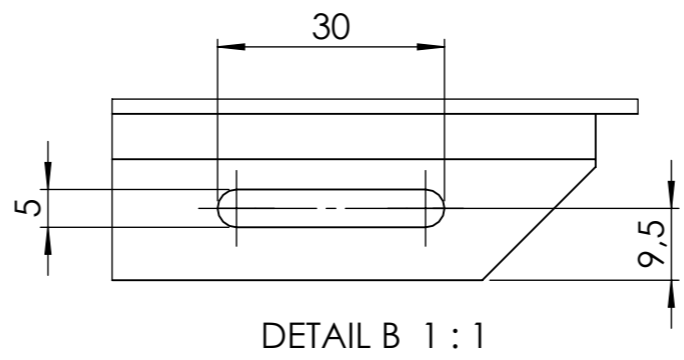
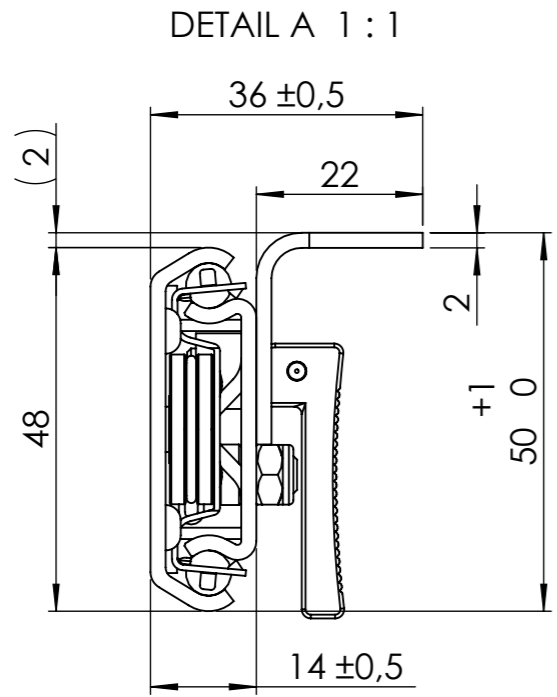
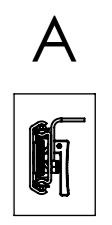
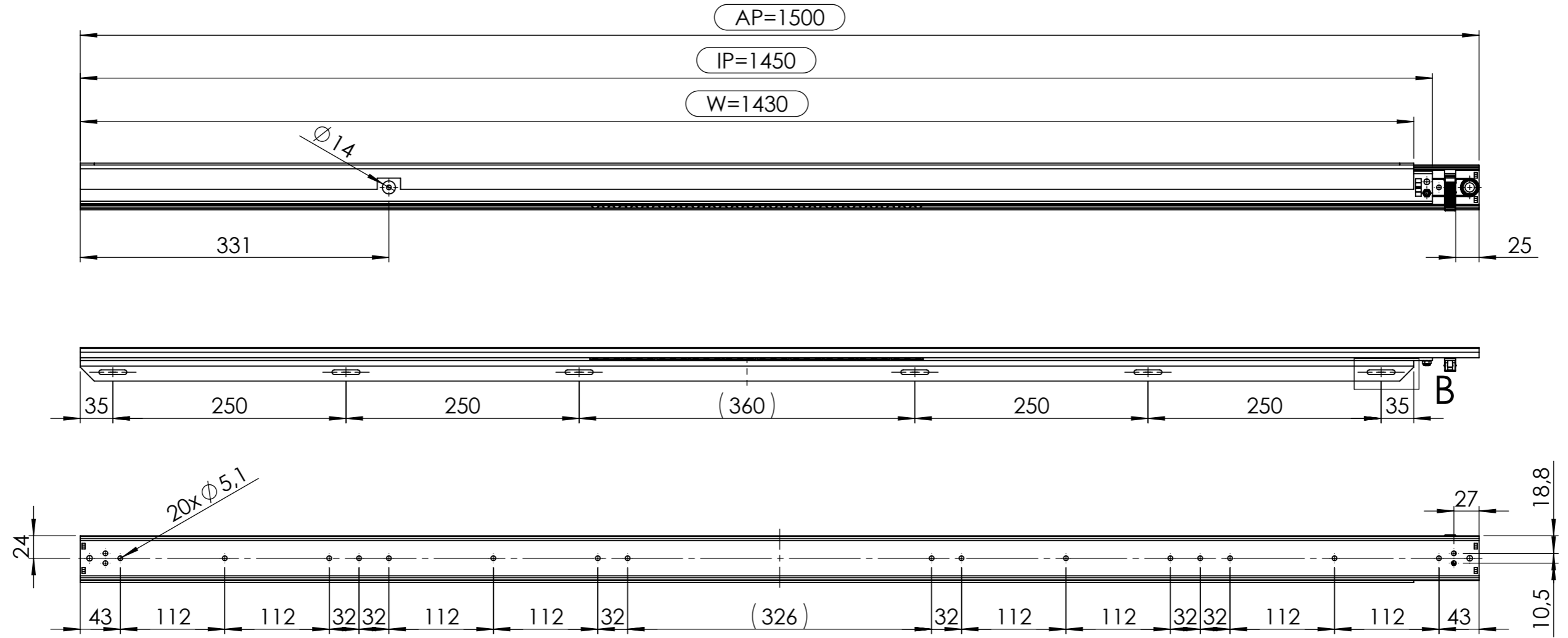


All property rights and rights to exploitation of copyright for this drawing data remain ours; they may not be made available to third parties without our consent.



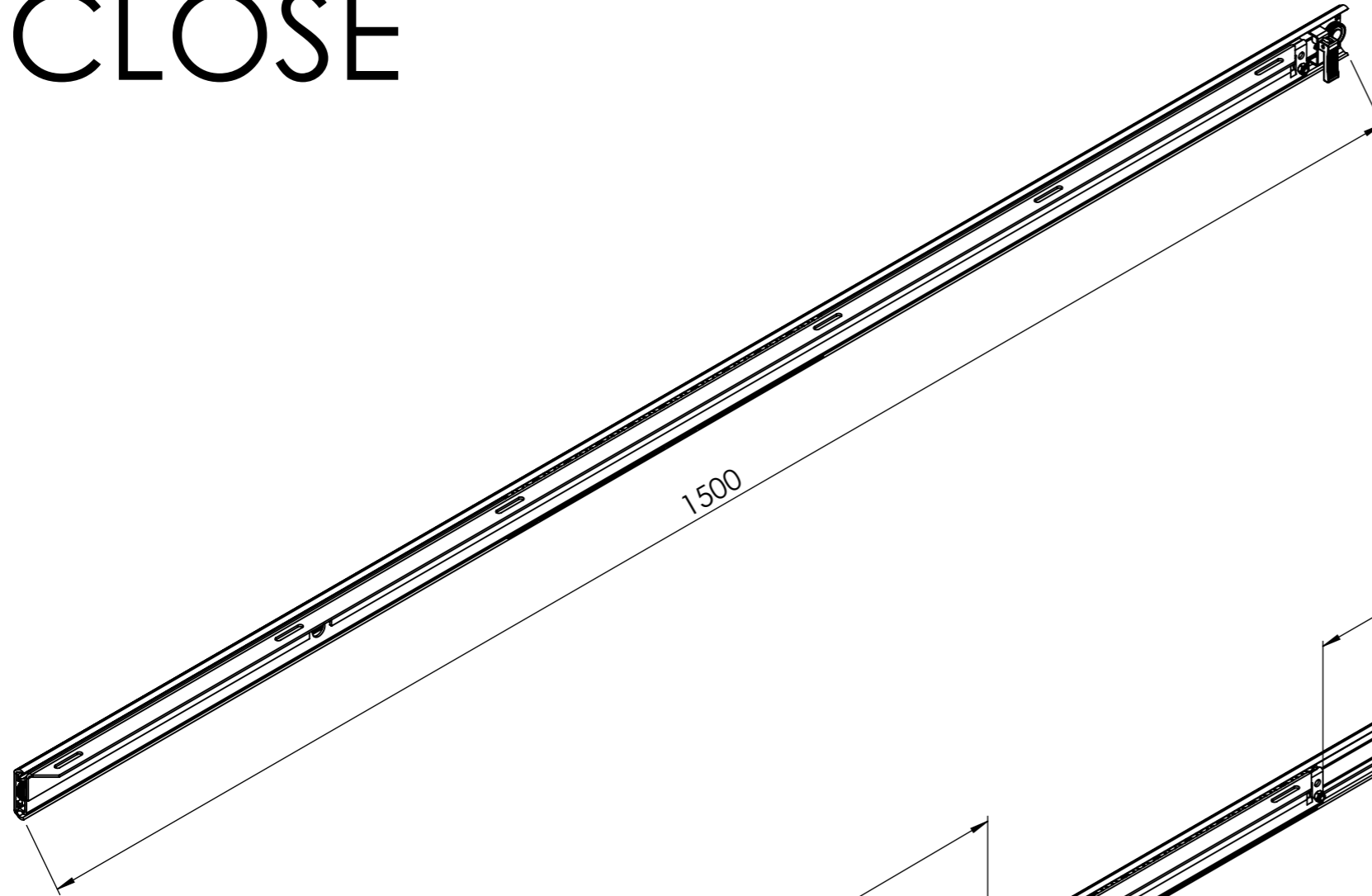
ATTENTION:
designed right
mirror-imaged left

way of travel: ca. **1095** mm

a	Stückliste überarbeitet	11.08.17	Va.
Index	Change	Date	Name
	Description: F-B/1500.4/1450.4/W1430/KK10		
	Surface: diverse	Material: diverse	Weight: 3.75 kg
PÖTTKER Transforming furniture	Name	Date	Company
	Signed	Vaquero	11.04.13
	Tested	J. Vaquero	16.08.2017
General tolerance: DIN ISO 2768 - m		Item No: 47150109	Scale 1:5 Page 1/3 A3

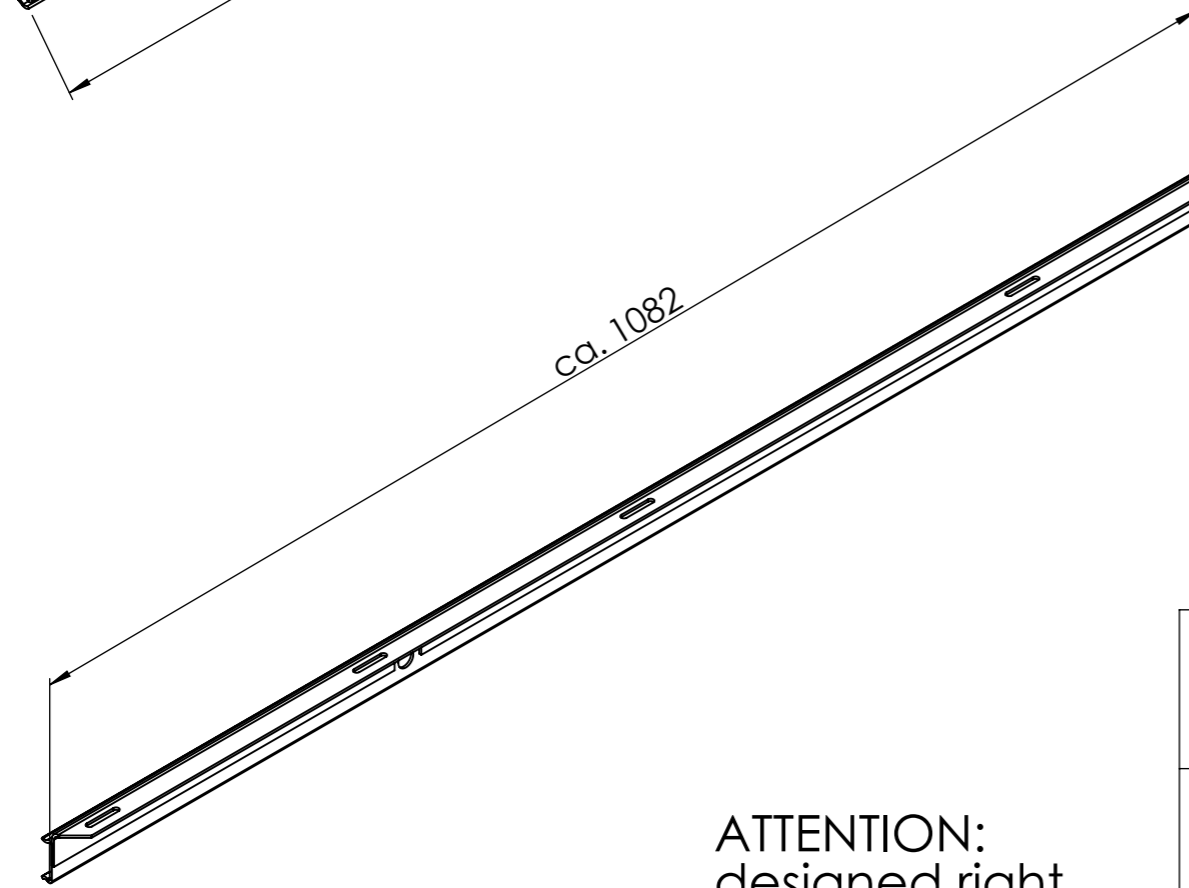
All property rights and rights to exploitation of copyright for this drawing data remain ours; they may not be made available to third parties without our consent.

CLOSE



WAY OF TRAVEL = ca. 1095

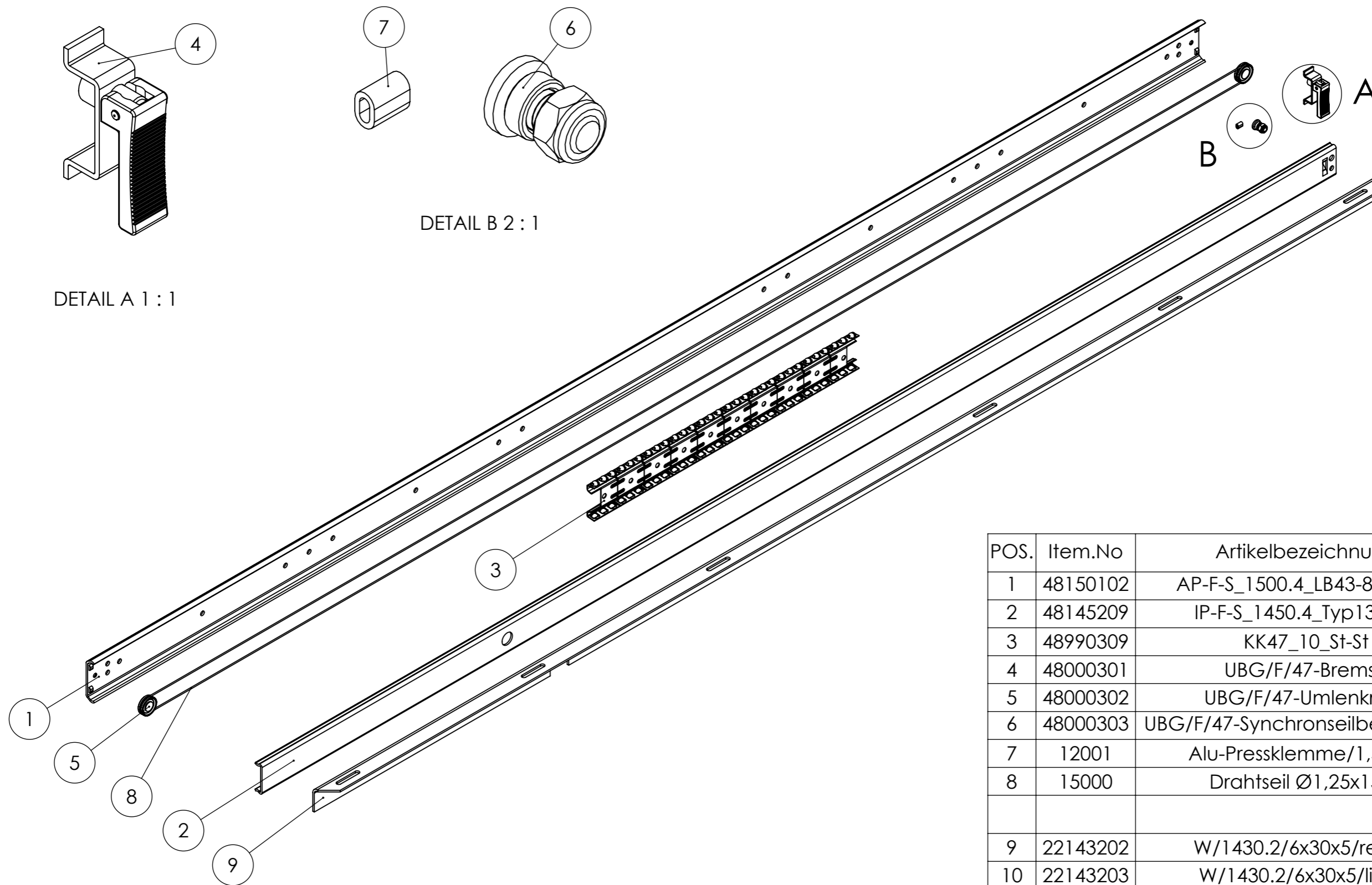
OPEN



ATTENTION:
designed right
mirror-imaged left

<p>DIN ISO 128-30</p>	Description: F-B/1500.4/1450.4/W1430/KK10				
	Surface: diverse		Material: diverse		Weight: 3.75 kg
PÖTTKER Transforming furniture	Signed	Name Vaquero	Date 11.04.13	Company	
	Tested	J. Vaquero	16.08.2017	Second Company:	
General tolerance: DIN ISO 2768 - m		Item No: 47150109	Scale 1:5	Page 2/3	A3

All property rights and rights to exploitation of copyright for this drawing data remain ours; they may not be made available to third parties without our consent.



DETAIL A 1 : 1

DETAIL B 2 : 1

POS.	Item.No	Artikelbezeichnung	Menge x2
1	48150102	AP-F-S_1500.4_LB43-8_Typ02	1
2	48145209	IP-F-S_1450.4_Typ13_331	1
3	48990309	KK47_10_St-St	1
4	48000301	UBG/F/47-Bremse	1
5	48000302	UBG/F/47-Umlenkrolle	2
6	48000303	UBG/F/47-Synchronseilbefestigung	1
7	12001	Alu-Pressklemme/1,5 mm	1
8	15000	Drahtseil Ø1,25x1500	1
			Menge x1
9	22143202	W/1430.2/6x30x5/re/331	1
10	22143203	W/1430.2/6x30x5/li/331	1

<p>DIN ISO 128-30</p>	Description: F-B/1500.4/1450.4/W1430/KK10			
	Surface: diverse		Material: diverse	Weight: 3.75 kg
<p>PÖTTKER Transforming furniture</p>	Name	Date	Company	
	Signed	Vaquero	11.04.13	Second Company:
Tested	J. Vaquero	16.08.2017		
General tolerance: DIN ISO 2768 - m		Item No: 47150109	Scale 1:4	Page 3/3

ATTENTION:
designed right
mirror-imaged left