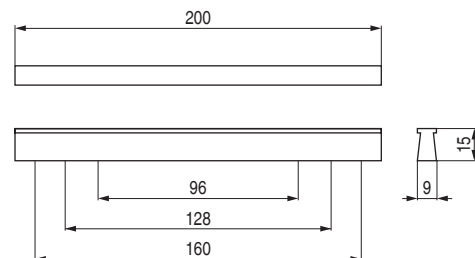
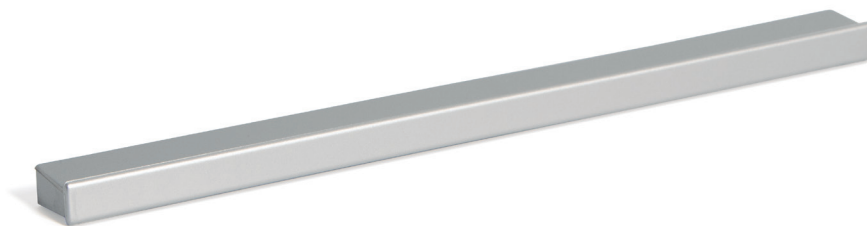


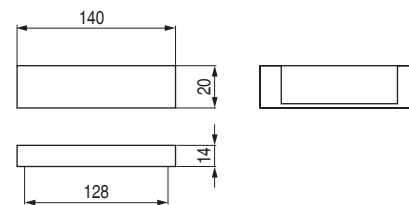
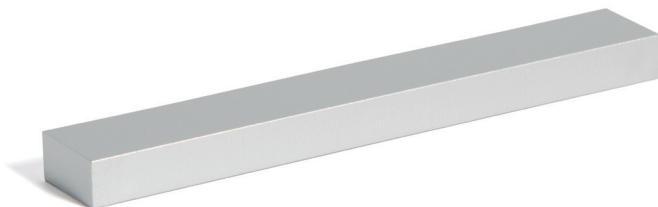
Zebra



• Para colocar con tornillos rosca madera.

Código	Acabado	
597.4	aluminio ral 9006	400

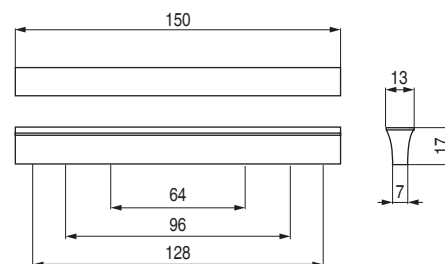
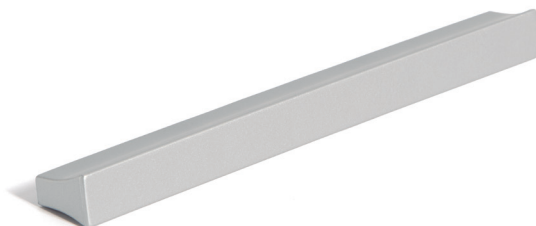
Meli



• Para colocar con tornillos rosca madera.

Código	Acabado	
1037.211	aluminio ral 9006	1.000

Trama



• Para colocar con tornillos rosca madera.

Código	Acabado	
597.3	aluminio ral 9006	25