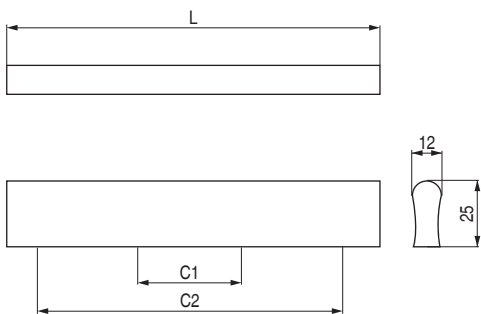
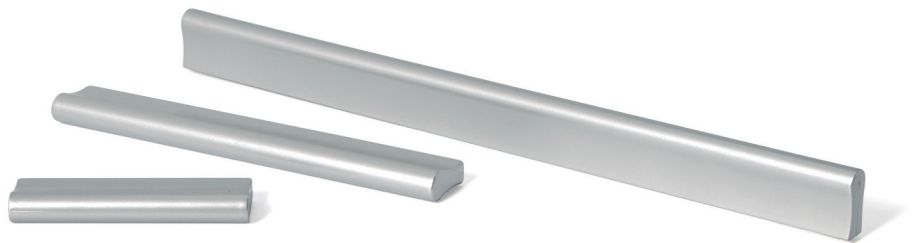



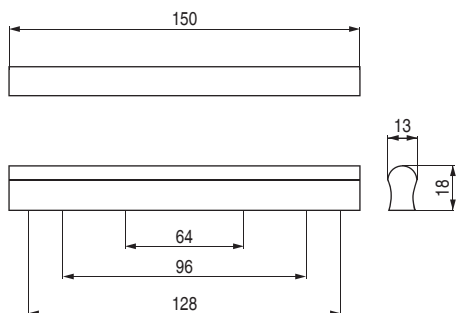
## Galax




• Para colocar con tornillos rosca madera.

Código	C1	C2	L	Acabado	
1037.203	32	64	84	aluminio ral 9006	1.000
1037.204	64	160	167	aluminio ral 9006	625
1037.205	96	192	300	aluminio ral 9006	300

## Maiola



• Para colocar con tornillos rosca madera.

Código	Acabado	
597.2	aluminio ral 9006	25